

# DURAFORM DELIVERS STYLE AT A GREAT VALUE

This state-of-the-art door is durable and can achieve many looks.

## D SERIES—DURAFORM

Duraform uses foils and coatings bonded to composite wood material, creating cabinets that are highly resistant to warping, heat, humidity and fading. This innovative process makes it extremely durable and easy to clean. Duraform finishes allow Duraform cabinet doors to exhibit the same styling and detail found in solid wood doors.

### DURAFORM FINISHES

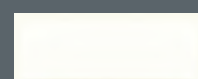


D16F, D16S and D18F not available in Duraform Silk

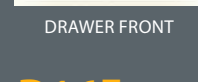
### D02S



STANDARD OVERLAY DOOR

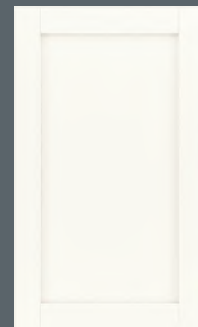


STANDARD OVERLAY DOOR

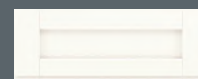


FULL OVERLAY DOOR

### D16F



FULL OVERLAY DOOR



FULL OVERLAY DOOR



FULL OVERLAY DOOR



DRAWER FRONT



DRAWER FRONT



DRAWER FRONT

## DT SERIES—DURAFORM TEXTURES

Relying on today's latest technologies, these stylish textures have been created for long-lasting and durable use. This range of finishes bonded to composite wood appeal to the designer and homeowner alike with their versatility and ability to create a range of today's latest styles.

**BREEZE** > With subtle striations of white and neutral tones, this textured finish makes a beautiful statement. This textured door style sits on a complementary Painted Linen cabinet box and exudes a sense of style and grace that works well for the creation of many unique styles.

**DRIFT** > With a remarkable likeness to a faded driftwood, this textured door style looks naturally amazing. Placed on a complementary Painted Harbor cabinet box, this textured door with its ridges and grooves captures the look of natural driftwood and can enhance any space in your home.

**CASCADE** > This rich, deep-textured door style sits on a complementary Maple Espresso cabinet box and creates a dramatic look that will last for years to come. This textured door style with its rich contrast serves as the perfect backdrop for kitchens, baths or any other living space.

### DT22S FULL OVERLAY



DURAFORM BREEZE DURAFORM DRIFT DURAFORM CASCADE



DRAWER FRONT DRAWER FRONT DRAWER FRONT

### DT24F FULL OVERLAY



DURAFORM BREEZE DURAFORM DRIFT DURAFORM CASCADE



DRAWER FRONT DRAWER FRONT DRAWER FRONT

# THE NATURAL COLOR AND BEAUTY OF WOOD

The wood for every cabinet door created by Waypoint® is carefully selected. Mother Nature insists on originality, so the characteristics of the wood grain and finish, whether in Cherry or Maple, will naturally vary slightly from piece to piece. But when it all comes together, homeowners are certain to be satisfied with the look, style and "Wow" of their new living space.



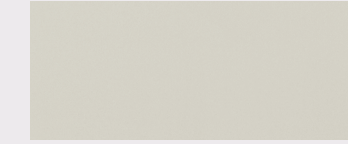
### CHERRY

Cherry is a close-grained, multicolored hardwood with occasional pin knots and fine grain variations appearing as curls and waves. Streaking, knots and subtle color variations are what give this wood its unique character. Its color typically darkens some over time.



### MAPLE

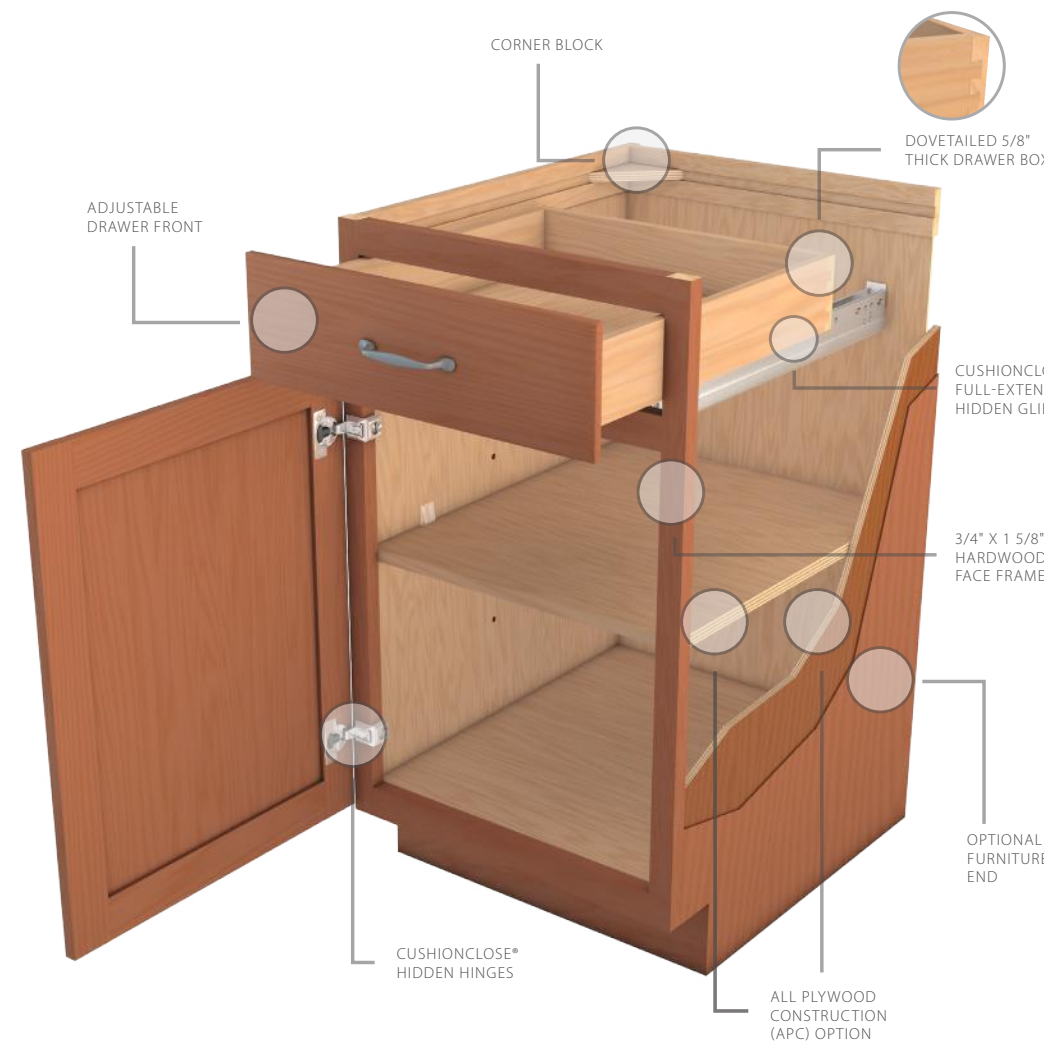
Maple is an exceptionally hard, finely grained wood species with a fine, even texture. Many love the darker stains that moderate the color variance and lighter stains that mellow with golden hues over time.



### PAINTED

Painted finishes combine hardwoods and engineered materials including solid wood, medium density fiberboard (MDF), high density fiberboard (HDF) and similar materials to achieve a product with superior stability, consistency, coverage and durability.

## CABINERY THAT'S BUILT TO LAST



WAYPOINTLIVINGSACES.COM

09/20 WP97370

Warning: Drilling, sawing, sanding, or machining wood products can expose you to wood dust, a substance known to the State of California to cause cancer. Avoid inhaling wood dust or use a dust mask or other safeguards for personal protection. This product can expose you to chemicals, including methanol, which is known to the State of California to cause birth defects or other reproductive harm. For more information go to www.P65Warnings.ca.gov.

# DOOR STYLES AND FINISHES FOR YOUR UNIQUE STYLE



LIVE LIFE IN STYLE



LIVING SPACE SHOWN IN 410 PAINTED BOULDER

Waypoint®  
LIVING SPACES

Exactly what you had in mind®

D SERIES DOORS/DRAWERS SHOWN IN DURAFORM LINEN



So many possibilities  
Such beautiful results  
Exactly what you had in mind®

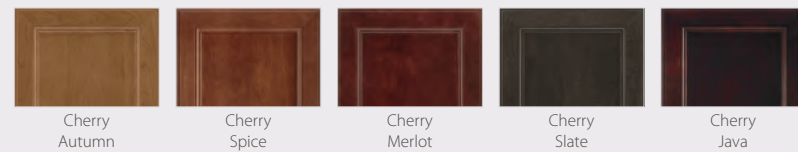
**PAINTED FINISHES**



**MAPLE FINISHES**



**CHERRY FINISHES**



LIVING SPACE SHOWN IN  
410 PAINTED BOULDER

**750** › Specialty Solid Door  
› Full Overlay Mitered Recessed Panel  
› Available in Painted, Maple & Cherry



[DOOR SHOWN IN MAPLE SPICE]

**750 AVAILABLE FINISHES**

**Painted:** Linen, Pewter Glaze, Silk, Hazelnut Glaze, Harbor, Ember Glaze, Stone, Boulder  
**Maple:** Rye, Spice, Mocha Glaze, Cognac, Auburn Glaze, Truffle, Slate, Espresso  
**Cherry:** Autumn, Spice, Merlot, Slate, Java

**740** › Specialty Solid Door  
› Full Overlay Mitered Raised Panel  
› Available in Painted, Maple & Cherry



[DOOR SHOWN IN MAPLE SPICE]

**740 AVAILABLE FINISHES**

**Painted:** Linen, Pewter Glaze, Silk, Hazelnut Glaze, Harbor, Ember Glaze, Stone, Boulder  
**Maple:** Rye, Spice, Mocha Glaze, Cognac, Auburn Glaze, Truffle, Espresso  
**Cherry:** Autumn, Spice, Merlot, Slate, Java

**720** › Specialty Solid Door  
› Full Overlay Mitered Raised Panel  
› Available in Painted, Maple & Cherry



[DOOR SHOWN IN MAPLE SPICE]

**720 AVAILABLE FINISHES**

**Painted:** Linen, Pewter Glaze, Silk, Hazelnut Glaze, Harbor, Ember Glaze, Stone, Boulder  
**Maple:** Rye, Spice, Mocha Glaze, Cognac, Auburn Glaze, Truffle, Slate, Espresso  
**Cherry:** Autumn, Spice, Merlot, Slate, Java

**660** › Solid Door  
› Full Overlay Raised Panel  
› Available in Painted, Maple & Cherry



[DOOR SHOWN IN MAPLE SPICE]

**660 AVAILABLE FINISHES**

**Painted:** Linen, Pewter Glaze, Silk, Hazelnut Glaze, Harbor, Ember Glaze, Stone, Boulder  
**Maple:** Rye, Spice, Mocha Glaze, Cognac, Auburn Glaze, Truffle, Slate, Espresso  
**Cherry:** Autumn, Spice, Merlot, Slate, Java

**650** › Solid Door  
› Full Overlay Recessed Panel  
› Available in Painted, Maple & Cherry

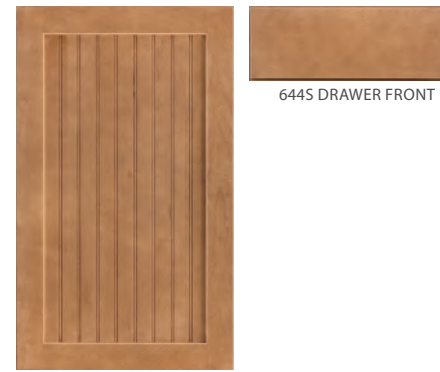


[DOOR SHOWN IN MAPLE SPICE]

**650 AVAILABLE FINISHES**

**Painted:** Linen, Silk, Harbor, Stone, Boulder  
**Maple:** Rye, Spice, Cognac, Truffle, Slate, Espresso  
**Cherry:** Autumn, Spice, Merlot, Slate, Java

**644** › Solid Door  
› Full Overlay Recessed Beadboard Panel  
› Available in Painted & Maple



[DOOR SHOWN IN MAPLE SPICE]

**644 AVAILABLE FINISHES**

**Painted:** Linen, Silk, Harbor, Stone, Boulder  
**Maple:** Rye, Spice, Mocha Glaze, Cognac, Auburn Glaze, Truffle

**610** › Solid Door  
› Full Overlay Raised Panel  
› Available in Painted & Maple



[DOOR SHOWN IN MAPLE SPICE]

**610 AVAILABLE FINISHES**

**Painted:** Linen, Pewter Glaze, Silk, Hazelnut Glaze, Harbor, Ember Glaze, Stone, Boulder  
**Maple:** Rye, Spice, Mocha Glaze, Cognac, Auburn Glaze, Truffle, Espresso

**606** › Solid Door  
› Standard Overlay Raised Panel  
› Available in Painted, Maple & Cherry



[DOOR SHOWN IN MAPLE SPICE]

**606 AVAILABLE FINISHES**

**Painted:** Linen, Pewter Glaze, Silk, Hazelnut Glaze, Harbor, Ember Glaze, Stone, Boulder  
**Maple:** Rye, Spice, Mocha Glaze, Cognac, Auburn Glaze, Truffle, Espresso  
**Cherry:** Autumn, Spice, Merlot, Slate, Java

**604** › Solid Door  
› Standard Overlay Raised Panel  
› Available in Painted & Maple



[DOOR SHOWN IN MAPLE SPICE]

**604 AVAILABLE FINISHES**

**Painted:** Linen, Pewter Glaze, Silk, Hazelnut Glaze, Harbor, Ember Glaze, Stone, Boulder  
**Maple:** Rye, Spice, Mocha Glaze, Cognac, Auburn Glaze, Truffle, Espresso

**570** › Specialty Veneer Door  
› Full Overlay Mitered Recessed Panel  
› Available in Painted



[DOOR SHOWN IN PAINTED HARBOR]

**570 AVAILABLE FINISHES**

**Painted:** Linen, Pewter Glaze, Silk, Hazelnut Glaze, Harbor, Ember Glaze, Stone, Boulder

**540** › Specialty Veneer Door  
› Full Overlay Mitered Recessed Panel  
› Available in Painted, Maple & Cherry

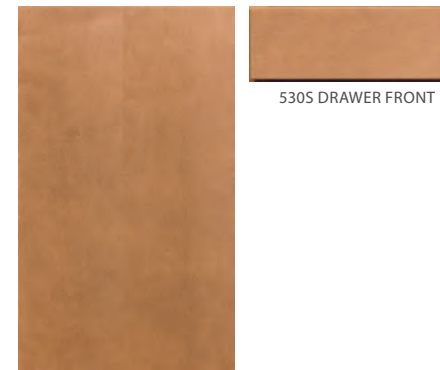


[DOOR SHOWN IN MAPLE SPICE]

**540 AVAILABLE FINISHES**

**Painted:** Linen, Pewter Glaze, Silk, Hazelnut Glaze, Harbor, Ember Glaze, Stone, Boulder  
**Maple:** Rye, Spice, Mocha Glaze, Cognac, Auburn Glaze, Truffle, Slate, Espresso  
**Cherry:** Autumn, Spice, Merlot, Slate, Java

**530** › Specialty Veneer Door  
› Full Overlay Slab Panel  
› Available in Maple & Cherry



[DOOR SHOWN IN MAPLE SPICE]

**530 AVAILABLE FINISHES**

**Maple:** Rye, Spice, Cognac, Truffle, Slate, Espresso  
**Cherry:** Autumn, Spice, Merlot, Slate, Java

**450** › Veneer Door  
› Full Overlay Raised Panel  
› Available in Maple & Cherry



[DOOR SHOWN IN MAPLE SPICE]

**450 AVAILABLE FINISHES**

**Maple:** Rye, Spice, Mocha Glaze, Cognac, Auburn Glaze, Truffle, Espresso  
**Cherry:** Autumn, Spice, Merlot, Java

**420** › Veneer Door  
› Full Overlay Recessed Panel  
› Available in Painted, Maple & Cherry



[DOOR SHOWN IN MAPLE SPICE]

**420 AVAILABLE FINISHES**

**Painted:** Linen, Silk, Harbor, Stone, Boulder  
**Maple:** Rye, Spice, Cognac, Truffle, Slate, Espresso  
**Cherry:** Autumn, Spice, Merlot, Slate, Java

**410** › Veneer Door  
› Full Overlay Recessed Panel  
› Available in Painted, Maple & Cherry



[DOOR SHOWN IN MAPLE SPICE]

**410 AVAILABLE FINISHES**

**Painted:** Linen, Silk, Harbor, Stone, Boulder  
**Maple:** Rye, Spice, Cognac, Truffle, Slate, Espresso  
**Cherry:** Autumn, Spice, Merlot, Slate, Java

**320** › Veneer Door  
› Standard Overlay Raised Panel  
› Available in Maple & Cherry



[DOOR SHOWN IN MAPLE SPICE]

**320 AVAILABLE FINISHES**

**Maple:** Rye, Spice, Mocha Glaze, Cognac, Auburn Glaze, Truffle, Slate, Espresso  
**Cherry:** Autumn, Spice, Merlot, Slate, Java

**310** › Veneer Door  
› Standard Overlay Recessed Panel  
› Available in Painted, Maple & Cherry



[DOOR SHOWN IN MAPLE SPICE]

**310 AVAILABLE FINISHES**

**Painted:** Linen, Pewter Glaze, Silk, Hazelnut Glaze, Harbor, Ember Glaze, Stone, Boulder  
**Maple:** Rye, Spice, Mocha Glaze, Cognac, Auburn Glaze, Truffle, Slate, Espresso  
**Cherry:** Autumn, Spice, Merlot, Slate, Java